

Rachel Deacon

BA (Hons)

Chelsea School of Art
London

Since graduating from Chelsea School of Art in 1991, Rachel has exhibited extensively in London, the UK and internationally. Her distinct style of work has grown enormously in popularity and she has been published by the Art Group and CCA Galleries who both distribute her work world wide.

Her imagery is derived from a carefully selected narrative, a short story, poem or extract from which she gains inspiration. Her work is not illustrative of that text, but freely interprets it and delights in the re-telling, the sentiment or idea. She explores dimensions, pattern and composition through drawings before presenting her view.

Her 'women' are self assured and provocative and often convey an inner strength suggested within the text. Naturally, through her inspiration, her paintings have a sense of narrative within them and are thoughtful or seductive, with quiet dignity and a timeless quality.

Through her yearly solo shows she has built up an extensive number of loyal clients. She also works to commission, working for large companies and private clients alike. She currently lives and works in London where the majority of her exhibitions are held.

[Contact Rachel Here](#)

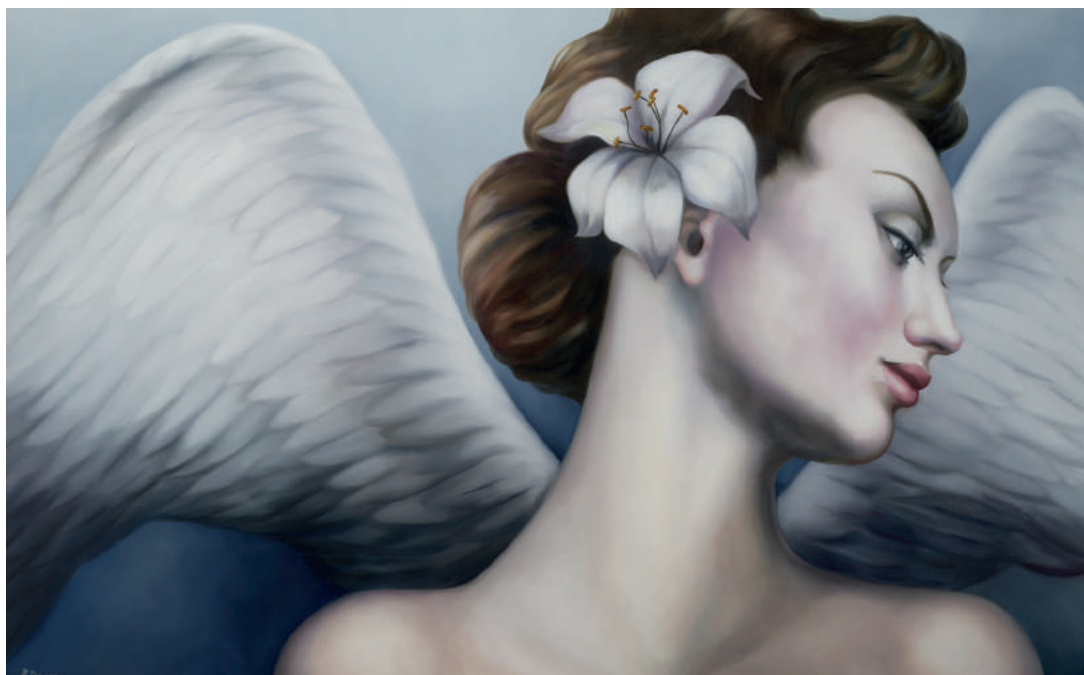


Rachel Deacon

Sleeping in Blue
12" x 9"



White Angel
48" x 30"





The Fur Wrap
30" x 24"



Flawless Faith
30" x 24"

Bather in Striped Suit
30" x 24"



Bather in Red
26" x 28"

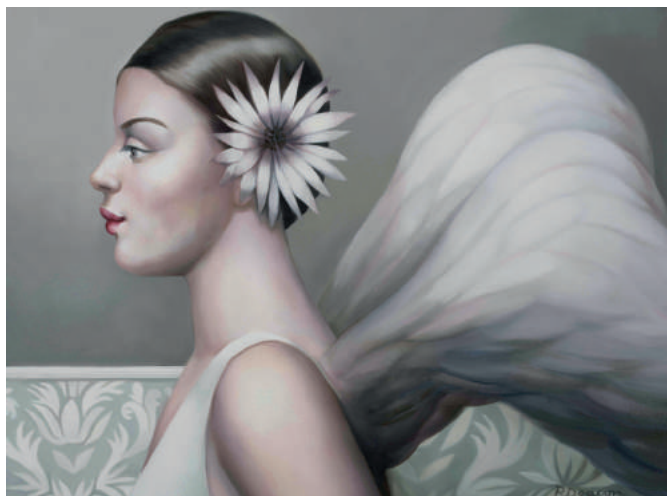




Spellbound
36" x 28"

Transformation
14" x 10"

Grey Angel
24" x 18"



Second Chance
20" x 16"

Butterfly Ball
18" x 12"





Bird of Paradise
30" x 24"



Dangerous &
Noble Things
40" x 30"

Rachel Deacon

BA (Hons)

Chelsea School of Art
London

Exhibitions

Solo Shows

2018 - RJD Gallery, New York, USA
2017 - Catto Gallery, Hampstead, London
2014 - Catto Gallery, Hampstead, London
2012 - Catto Gallery, Hampstead, London
2011 - Ingo Fincke Gallery, London
2007 - Ingo Fincke Gallery, London
2006 - Ingo Fincke Gallery, London
2005 - Baillie Gallery, Tower Bridge, London
2005 - Ingo Fincke Gallery, London
2005 - Cambridge Contemporary Art, Cambridge
2003 - Cambridge Contemporary Art, Cambridge
2002 - Gallery One, London
2001 - CCA Gallery, Chelsea, London
2000 - Zella Gallery, Chelsea, London
1999 - Zella Gallery, Chelsea, London
1998 - Zella Gallery, Chelsea, London
1998 - Ingo Fincke & Son, Battersea, London
1992 - Brixtonian Backyard, Soho, London

Art Fairs

2012 - Henley Festival, Henley.
2011 - Palace Art Fair, Fulham, London
2005/7 - Chelsea Art Fair, London
2002 - C20/21 Art with Portal Gallery
2002/4 - Glasgow Art Fair, Glasgow, Scotland
2001/2 - New York Contemporary Art Fair, USA
2001/4 - Art 2001, Business Design Centre, London
99/12 - Affordable Art Fair, Battersea Park, London

Group Shows

2018 - Society of Women Artists, Mall Galleries, London
2018 - Ingo Fincke Gallery, London
2017 - Society of Women Artists, Mall Galleries, London
2017 - Ingo Fincke Gallery, London
2016 - Concept Gallery, Glasgow
2015 - Good Figures, Mall Galleries, London
2015 - Artcatto, Algarve, Portugal
2012 - The Red Dot Gallery, Holt, Norfolk
2012 - Art Erotica, Cork Street, London
2011 - Ingo Fincke Gallery, London
2010 - Cambridge Contemporary Art, Cambridge
2010 - Ingo Fincke Gallery, London
2009 - Ingo Fincke Gallery, London
2009 - Cambridge Contemporary Art, Cambridge
2008 - Ingo Fincke Gallery, London
2007 - Cambridge Contemporary Art, Cambridge
2007 - Ingo Fincke Gallery, London
2006 - Cambridge Contemporary Art, Cambridge
2005 - Baillie Gallery, London
2004 - Cambridge Contemporary Art, Cambridge
2004 - Baillie Gallery, London
2003 - Royal College of Art, Kensington, London
2003 - Cambridge Contemporary Art, Cambridge
2002 - Portal Gallery, Mayfair, London
2002 - Cambridge Contemporary Art, Cambridge
2001 - Royal College of Art, Kensington, London
2001 - Gallery One, Barnes, London
2001 - Cambridge Contemporary Art, Cambridge
2000 - Royal College of Art, Kensington, London
1999 - Maymie White Contemporary Art, London
1999 - Collyer Bristow Gallery, Holborn, London
1999 - Morley Gallery, Westminster, London
1998 - Ingo Fincke & Son, Battersea, London
1998 - Thames Galleries, Dulwich, London
1998 - Maymie White Contemporary Art, London
1997 - Thames Galleries, Putney, London
1996 - Dryden Street Gallery, Covent Garden, London
1996 - Edith Grove Gallery, Chelsea, London
1995 - Mall Galleries, London
1995 - Tabernacle Gallery, Portobello, London
1994 - Ingo Fincke & Son, Battersea, London
1992 - Commonwealth Institute, Kensington, London

[Contact Rachel Here](#)



Whispered Things
30" x 40"

www.racheldeacon.com
rachel@racheldeacon.com
07967 601 542

Front cover
Flourish at Dusk
24" x 20"
